



Wednesday, May 23th

8:30 *Registration and Coffee*

Wed. 9:00-10:30-- Amphitheater

Chair: François Bourguignon (*Paris School of Economics*)

9:00 – 9:10 **Daniel Cohen** (*CEPREMAP*) & **Pierre Yves Geoffard** (*Paris School of Economics*), Welcome of the Participants

9:10 – 9:50 **Shoshana Grossbard** (*San Diego State University*), "Economics of the household and the gender gap in economics"

9:50 – 10:30 **Pierre Andre Chiappori** (*Columbia University*), "Household Economics: where do we stand?"

10:30 *Coffee break*

11:00 – 13:00 **Parallel sessions A:** Debt and Consumption, Health, Marriage Matching, Labor, Culture

13:00 *Buffet Lunch*

14:00 - 16:00 **Parallel Sessions B:** Retirement, Health, Education & Children Outcomes, Marriage, Savings & Consumption

16:00 *Coffee Break*

16:30 – 18:30 **Parallel Sessions C:** Savings, Gender Norms & Labor, Marriage & Divorce, Children, Household Health

20:00 *Conference Dinner – Auberge du Moulin Vert, 33 Rue du Moulin Vert.*

Thursday, May 24th

8:30 *Coffee*

Thu. 8:40 – 10:00 -- Amphitheater

Chair: Daniele Paserman (*Boston University*)

8:40 – 9:20 **Lee Badgett** (*University of Massachusetts*), Amherst "Making the Economics of the Family Matter: Lessons from the Marriage Equality Debate"

9:20 – 10:00 **Raquel Fernandez** (*New York University*) "Cultural Change"

10:00 *Coffee Break*

10:30-12:30 **Parallel sessions D:** Assets & Consumption, Household Interactions, Children & Health, Fertility, Labor & Migration, Education & Expenditure

12:30 *Buffet Lunch*

13:30-15:30 **Parallel Sessions E:** Health & Power, Labor, Intrahousehold Inequality, Time Use & Children, Household Decisions, Financial Decisions

15:30 *Coffee Break*

15:45 -17:45 **Parallel Sessions F:** Savings & Welfare, Marriage, Labor and Education, Children & Parents, Household Production & Food Insecurity

18:00-18:30 **SEHO members assembly-- Amphitheater**



PARIS SCHOOL OF ECONOMICS
ÉCOLE D'ÉCONOMIE DE PARIS

CEPREMAP

CENTRE POUR LA RECHERCHE ÉCONOMIQUE ET SES APPLICATIONS

Paris School of Economics, 48 Boulevard Jourdan, Paris
(Reachable on foot from Paris left bank or short Uber ride)



Wednesday 23rd May, 11.00-13.00

Sessions A: Debt and Children, Health, Marriage Matching, Labor, Culture

Wed. 11:00-13:00 **A1. Debt and Consumption-- Amphitheater**

Chair: Charles Yuji Horioka (*Asian Growth Research Institute & Osaka University*)

Wilbert van der Klaauw (*Federal Reserve Bank New York*), Zachary Bleemer, Meta Brown, Donghoon Lee, “Debt, Jobs, or Housing: What’s Keeping Millennials at Home?”

Tullio Jappelli (*Naples University*), D. Christelis, D. Georgarakos, L. Pistaferri, M. Van Rooij, "Asymmetric Consumption Effects of Transitory Income Shocks"

Ran Sun Lyng (*Aarhus University*), “The Impact of the Financial Crisis on Homeowners’ Portfolio Choice”

Cliff A Robb (*University of Wisconsin – Madison*), Sam Schreiber, “The Role of Student Loan Debt in Homeownership Decisions”

Wed. 11:00-13:00 **A2. Health-- R2 21**

Chair: Karen S. Conway (*University of New Hampshire*)

Hope Corman (*Rider University & NBER*), Dhaval Dave, Ariel Kalil, Ofira Schwartz-Soicher, Nancy E. Reichman, “Effects of Welfare Reform on Youth Social Behavior”

Brad R. Humphreys (*West Virginia University*), Jane E. Ruseski, Li Zhou, “Understanding the Determinants of Maternal Smoking in Appalachia”

Andrea Menclova (*University of Canterbury, Business and Law*), Karen S. Conway, “You’ll Never Walk Alone – the Effects of Walkability on Pregnancy Behaviors”

Dhaval Dave (*Bentley University & NBER*), Monica Deza, Anca Grecu, Henry Saffer, “Prenatal Opioid Abuse and Infant Health: Effects of Mandatory Access Prescription Drug Monitoring Programs”

Wed. 11:00-13:00 **A3. Marriage Matching-- R2 01**

Chair: David Ong (*Peking University, HSBC Business School*)

Eugene Choo (*Yale-NUS College*), Liang Chen, “Identification of Counterfactuals in Marriage Matching Model”

Joe Price (*Brigham Young University*), “Mismatches in the Marriage Market”

Bram De Rock (*ECARES, Université Libre de Bruxelles*), Laurens Cherchye, Frederic Vermeulen, “Marital Matching, Economies of Scale and Intrahousehold Allocations”

Edoardo Ciscato (*Sciences-Po Paris*), “Marriage, Divorce and Wage Uncertainty: How Changes in the Wage Distribution Reshaped the Marriage Market”

Wed. 11:00-13:00 **A4. Labor-- R1.13**

Chair: David Margolis (*Paris School of Economics*)

Yolanda Pena-Boquete (*Institute for Studies on Mediterranean Societies, Naples*), Ronald L. Oaxaca, “A Different Approach to Quantile Wage Decompositions with an Application to Gender Wage Gaps in the U.K. and the U.S.”

Karen Mumford (*University of York*), Antonia Parera-Nicolau, Yolanda Pena-Boquete, “Labour Supply and Childcare in Two-Parent Families: A Structural Approach”

Dominique Meurs (*University Paris Ouest Nanterre La Défense*), Claudio Lucifora, Elena Villar, “Children, Earnings and Careers in an Internal Labor Market. An Event Study”

Eva Sierminska (*LISER Luxembourg*), Ronald L. Oaxaca, “Specialization in Economics: A gender story?”

Wed. 11:00-13:00 **A5. Culture-- R1. 09**

Chair: Eleonora Patacchini (*Cornell University*)

Stefania Marcassa (*THEMA, Université de Cergy-Pontoise*), Alessandra Fogli, “The Geography of Social Change”

Simone Moriconi (*Ésseg School of Management, La Défense*), “Country-specific preferences and employment rates in Europe”

Eva Markowsky (*Universität Hamburg*), Miriam Beblo and Luise Görge “Culture at work? Moving the epidemiological approach to contemporary Europe”

Lina Aldén (*Linnaeus University*), Emma Neuman, “Culture and the gender gap in major: An analysis using sibling comparisons”

Wednesday 23rd May 14.00-16.00

Parallel Sessions B: Retirement, Health, Education & Children Outcomes, Marriage, Savings & Consumption

Wed. 14:00-16:00 B1. Retirement-- R1 09

Chair: André Masson (*Paris School of Economics*)

Ainhoa Aparicio (*Collegio Carlo Alberto, Turin*), “The uneven impact of women's retirement on their daughters' employment: Southern European vs other European countries”

Arthur van Soest (*Tilburg University*), Pierre-Carl Michaud, Luc Bissonnette, “Retirement of Couples: A Stated Preferences Analysis”

Matilde Pinto Machado (*Universidad Carlos III de Madrid*), Inés Berniell, Dolores De la Mata, “The Impact of a Permanent Income Shock on the Situation of Women in the Household: the case of a pension reform in Argentina”

Bernt Bratsberg (*Frisch Center & Oslo University*), Elena Stancanelli, “Partial retirement and partners' hours of work: Learning from a Norwegian retirement reform”

Wed. 14:00-16:00 B2. Health-- Amphitheater

Chair: Benedicte Apouey (*Paris School of Economics*)

Titus Galama (*University of Southern California, Center for Economic and Social Research*), “Gene-by-SES interplay in health behavior: theory and empirics”

Blunch, Niels-Hugo (*Washington and Lee University*), Nabanita Datta Gupta, “Mothers' Health Knowledge for Children with Diarrhoea: Who You Are or Who You Know?”

Bhash Mazumder (*Federal Reserve Bank of Chicago*), “Intergenerational Health Mobility in the US”

Hamid R. Oskorouchi (*University of Hohenheim*), “Less is Too Much: Afghan Child Health and In Utero Exposure to Conflict”

Wed. 14:00-16:00 B3. Education & Children outcomes-- R2.01

Chair: Julien Grenet (*Paris School of Economics*)

Mariana Zerpa (*University of Leuven*), “Preschool Education and Child Development and Health: Evidence from State Pre-K Programs”

Marco Bertoni (*Padoa University*), Giorgio Brunello, Lorenzo Cappellari, “Parents, Siblings and Schoolmates. The Effects of Family-School Interactions on Educational Achievement and Long-term Labor Market Outcomes”

Valdemar Neto (*Fundação Getúlio Vargas, Brazil*), “Youth Responses to Cash Transfers: Evidence from Brazil”

Ralitza Dimova (*Global Development Institute, University of Manchester*), “Parental risk preferences, women's bargaining power and educational outcomes of children: Lab-in-the-field evidence from rural Côte d'Ivoire”

Wed. 14:00-16:00 B4. Marriage-- R2.21

Chair: Joe Price (*Brigham Young University*)

David Ong (*Peking University, HSBC Business School*), “Hard to get: The scarcity of women and the competition for high-income men in urban China”

Ho-Po Crystal Wong (*National Tsing Hua University, Taiwan*), “Can't Wait Any Longer? The Length of Separation Periods and Remarriage

Mizuki Komura (*Musashi University, Japan*), “Consequences of War: Japanese Demographic Transition and the Marriage Market”

Todd Sorensen (*University of Nevada*), Adriana Hernández Castañeda, “Changes in Immigrant Marriage Patterns: The Role of Sex-Ratios and Immigration Policies”

Wed. 14:00-16:00 B5. Savings & Consumption-- R1 13

Chair: Viola Angelini (*Groningen University*)

Sergio Perelman (*HEC University of Liege and CREPP*), Mathieu Lefebvre, “Public pension wealth and household asset holdings: new evidence from Belgium”

Konstantinos Tatsiramos (*University of Luxembourg and LISER*), “Monetary Policy Transmission to Consumer Sentiment and Durable Consumption”

Jiyuan Wang (*University of Groningen*), R.J.M. Alessie, V. Angelini, “The Under-Investment of Human Capital and Old-Age Transfers: The Role of Two-Sided Altruism, Liquidity Constraints and Fixed Costs

Christine Ho (*Singapore Management University*), “Gender-Based Parental Investments and Intergenerational Support”

Wednesday 23rd May 16.30-18.30

Parallel Sessions C: Savings, Gender Norms & Labor, Marriage & Divorce, Children, Household Health

Wed. 16:30-18:30 C1. Savings-- R2.21

Chair: **Luc Arrondel** (*Paris School of Economics*)

Charles Yuji Horioka (*Asian Growth Research Institute and Osaka University*), Luigi Ventura, “The Saving Behavior of the Elderly in Italy”

Marianna Brunetti (*University of Rome Tor Vergata*), “Till Mortgage Do Us Part: Refinancing Costs and Household’s Bank Switching”

David C Ribar (*Melbourne Institute: Applied Economic and Social Research*), Carole Comerton-Forde, Edwin Ip, James Ross, Nicolas Salamanca and Sam Tsiaplias, “Using Survey and Banking Data to Measure Financial Wellbeing”

Jacques Silber (*Bar-Ilan University, Israel*), Eva Sierminska, “Households and the diversity of assets holdings in the United States in 2007 and 2009”

Wed. 16:30-18:30 C2. Gender Norms & Labor-- R1 13

Chair Libertad Gonzales (*Universitat Pompeu Fabra & GSE*)

Hanna Swahnberg (*Linnaeus University, Sweden*), Lina Aldén, Mats Hammarstedt, “(I can’t get no) job satisfaction? Differences by sexual orientation in Sweden”

Sarah Rosenberg (*Université Libre de Bruxelles*), “Do Couples Commit to Gender Norms? The Effect of Relative Wages on Labor Supply”

Eiji Yamamura (*Seinan University, Japan*), Yoshiro Tsutsui, “Spousal gaps in educational attainment, age, and height and their impact on the allocation of housework”

Elisabeth Cudeville (*Centre d’Economie de la Sorbonne, Paris 1 Panthéon-Sorbonne*), Catherine Sofer, Martine Gross, “Measuring Gender Norms in Domestic Work : A Comparison between Homosexual and Heterosexual Couples”

Wed. 16:30-18:30 C3. Marriage & Divorce-- R1 09

Chair: Sylvie Lambert (*Paris School of Economics*)

Clémentine Sadania (*Aix-Marseille School of Economics*), “Empowerment at Marriage: International Migration and the Egyptian Marriage Market”

Manuel Alejandro Estefan (*Institute for Fiscal Studies*), “Male-Female Earnings Inequality and Divorce Rates: Evidence from Mexico”

Alena Bicakova (*CERGE-EI, Charles University Prague and the Czech Academy of Sciences*), Stepan Jurajda, “Field-of-Study Homogamy”

Christine Luecke (*Otto von Guericke University Magdeburg, Germany*), “Unlucky at Work, Unlucky in Love: The Long-Term Effects of Job Loss on Marital Stability”

Wed. 16:30-18:30 C4. Children-- Amphitheater

Chair: Karen Mumford (*University of York*)

Wei Fan (*Heriot-Watt University, Edinburgh*), “Reinforcement or Compensation? Heterogeneous Parental Responses to Children’s Revealed Human Capital Levels in Ethiopia”

Nadia Campaniello (*University of Essex*), “Parental love is not blind”

Valerie A. Ramey (*University of California San Diego*), “Time Investment in Children by Extended Families”

Cinzia Di Novi (*University of Pavia Italy*), “Smoking Epidemic Across Generations, Gender and Educational Groups: A Matter of Diffusion of Innovations”

Wed. 16:30-18:30 C5. Households & Health-- R2 01

Chair: Olivier Donni (*Université Cergy Pontoise*)

Enrica Croda (*Ca’ Foscari University of Venice*), Jonathan Skinner, Laura Yasaitis, “The Health of Disability Insurance Enrollees: An International Comparison”

Raphael Cottin (*PSL, Université Paris Dauphine*), Teto Abdelkader, “Is ‘free’ healthcare enough to insure consumption against illness? Evidence from a targeted hospital fee waiver in Morocco”

Elodie Djemaï (*Université Paris-Dauphine*), “Mothers and Fathers: co-residence, education and child health”

Akito Kamei (*University of Illinois at Urbana-Champaign*), “The Impact of Rainfall on Women/Child Agricultural and Domestic Labor Supply, Climate and Child Labor using Ugandan Panel Data 2009-2012”

Thursday 24th May, 10.30-12.30

Parallel sessions D: Assets & Consumption, Household Interactions, Children & Health, Fertility, Labor & Migration, Education & Household Expenditure

Thu. 10:30-12:30 D1. Assets & Consumption -- Amphitheater

Chair: Charles Yuji Horioka (*Asian Growth Research Institute & Osaka University*)

Jeanne Lafortune (*Pontificia Universidad Catolica de Chile*), Corinne Low, "Betting the House: How Assets Influence Marriage Selection, Marital Stability, and Child Investments"

Laura M. Argys (*University of Colorado*), Andrew I. Friedson, M. Melinda Pitts, "Debt, Death and Business Cycles"

Denni Tommasi (*Université libre de Bruxelles, ECARES*), "Control of Resources and Demand for Food"

Luca Piccoli (*University of Balearic Islands*), "Personality Traits and Household Consumption Choices"

Thu. 10.30-12.30 D2. Household interactions – R2 01

Chair: Laurens Cherchye (*University of Leuven*)

Xinzheng Shi (*School of Economics and Management, Tsinghua University, Beijing, China*), "Are spousal labor supplies substitutes? Evidence from the workweek reduction policy in China"

Miki Kohara (*Osaka University*), "Does a husband's job-loss damage the wife's health?"

Lucia Mangiavacchi (*University of the Balearic Islands*), Shoshana Grossbard, William Nilsson and Luca Piccoli, "Spousal Income Association, Family Composition and Inequality: a Simulation Approach"

Nabanita Datta Gupta (*Aarhus University*), "Employment Adjustments Around Childbirth: Gender and Family-Related Differences"

Thu. 10.30-12.30 D3. Children & Health – R2 21

Chair: Hope Corman (*Rider University & NBER*)

Tom Robinson (*Newcastle University, UK*), "Maternal Labour Market Characteristics and Adolescent Risky Health Behaviours"

Anna Sanz-de-Galdeano (*University of Alicante*), Nuria Rodriguez-Planas, Anastasia Terskaya, "Gender Norms and the Gender Gap in Teenagers' Risky Behaviors and Later-Life Outcomes: Evidence for the US"

Romina Tome (*Sanford School of Public Policy, Duke University*), "Curtailling Access to Alcohol: Evidence on the Impact over Child Outcomes in Brazil"

Malte Sandner (*Institute for Employment Research, IAB*), "The Effects of Universal Public Childcare Provision on Cases of Child Neglect and Abuse"

Thu. 10.30-12.30 D4. Fertility -- R1 13

Chair: Valerie Ramey (*University of California, San Diego*)

Chiara Orsini (*LSE Department of Health Policy and Department of Social Policy*), "Girls and Boys: Economic Crisis, Fertility, and Birth Outcomes"

Libertad Gonzales (*Universitat Pompeu Fabra and Barcelona GSE*), "The Effects of Paternity Leave on Fertility and Labor Market Outcomes"

Holger Stichnoth (*ZEW Mannheim*), Hans-Martin von Gaudecker, Tim Obermeier, "Women's Careers and Fertility Behavior"

Kasey Buckles (*University of Notre Dame*), "Is Fertility a Leading Economic Indicator?"

Thu. 10.30-12.30 D5. Labor & Migration -- R1 14

Chair: Bert Bratsberg (*Frisch Center, Oslo*)

Almudena Sevilla (*Queen Mary University of London*), "Labor Market Impacts of Granting Access to Driving Licenses to Undocumented Immigrants"

Rune Vammen Lesner (*Aarhus University*), "Life Skills Development through a Spare-Time Job"

Joseph J. Sabia (*San Diego State University*), "Do Minimum Wages Help or Hurt Low-Skilled Immigrants?"

Mariapia Mendola (*University of Milano-Bicocca*), "Family Size, Sibling Rivalry and Migration: Evidence from Mexico"

Thu. 10.30-12.30 D6. Education & Household Expenditure -- R1 16

Chair: David C Ribar (*Melbourne Institute: Applied Economic and Social Research*)

Colin Cannonier (*Jack C. Massey College of Business, Belmont University*), Monica Galloway Burke, "The Impact of Education on Household Decision Making Among Women in Sierra Leone"

Daniela Vidart (*University of California, San Diego*), "Fertility, Human Capital and the Short and Long Term Effects of Electrification"

Liz Ignowski (*KU Leuven, LICOS Centre for Institutions and Economic Performance*), "Intra-household Expenditures and Transfers: Evidence From a Choice Experiment in Rural Tanzania"

Kusum Mundra (*Rutgers University, Newark*) "Lifetime Labor Market Relative Intermittency Gap and its Effect on Gender Wage Gap"

Thursday 24th May, 13.30-15.30

Parallel sessions E: Health & Power, Labor & Education, Intra-household Inequality, Time Use & Children, Household Decisions, Financial Decisions

Thu. 13.30-15.30 E1. Health & Power-- R2 01

Chair: Nabanita Datta Gupta (*Aarhus University*)

Rachel Cassidy (*Institute for Fiscal Studies*), "The power to protect: household bargaining and female condom use"

Rossella Calvi (*Rice University Economics Department*), Arthur Lewbel and Denni Tommasi, "Women's Empowerment and Family Health: Estimating LATE with Mismeasured Treatment"

Sarah Grace Cheng See (*University of York*), "Juggling Work and Family: The Effect of Flexibility on Mental Health"

Gigi Foster (*University of New South Wales*), Leslie Stratton, "Is there a gender power paradox within the household? A replication and extension of Bertrand, Kamenica, and Pan (2015) for the US and Australia"

Thu. 13.30-15.30 E2. Labor and Education -- R2 21

Chair: Ryuichi Tanaka (*Institute of Social Science, The University of Tokyo*)

Yeseul Hyun (*Boston University*), "Gender Role Attitudes, Endogamous Marriage, and Labor Supply Patterns of Immigrant Women"

Núria Rodríguez-Planas (*City University of New York, Queens College*), Ryuichi Tanaka, "Local Labor Demand, Local Gender Social Norms, and Female Labor Force Supply in Japan"

Eliane El Badaoui (*Nanterre University*), Lucia Mangiavacchi "Fostering, Children's Time Use and Schooling in Niger: A Test of the Cinderella Effect"

Hector Moreno (*Paris School of Economics*), "The effect of grandparental education on their offspring's education"

Thu. 13.30-15.30 E3. Intra-household Inequality -- Amphitheater

Chair: Daniele Paserman (*Boston University*)

Giulia La Mattina (*University of South Florida*), Osea Giuntella and Climent Quintana-Domeque, "Assortative Mating, Intergenerational Transmission and Inequality: Evidence from Birth Weight using Parental Grandmother Fixed Effects"

Jacob Penglase (*Boston College*), "Child Fostering and Intra-household Inequality"

Katrin Huber (*University of Passau, Germany*), Erwin Winkler, "All You Need is Love? Trade Shocks, Inequality, and Risk Sharing between Partners"

Eleonora Patacchini (*Cornell University*), Angela Cools, "On the Sources of the Gender Earnings Gap"

Thu. 13.30-15.30 E4. Time Use & Children-- R1 16

Chair: Claudia Senik (*Paris School of Economics*)

Elsa Fontainha (*ISEG Lisbon School of Economics & Management*), "Parental Impact on the schooling and financial choices of young adults in the US in 2005-2013"

Audrey Boussein (*LISER Luxembourg*), Arnaud Dupuy, "Childcare, quality and location: an hedonic approach"

Idriss Fontaine (*THEMA, Université de Cergy-Pontoise*), "The causal effect of family size on mothers' labor supply: evidence from France and its overseas regions"

Alexandros Theloudis (*LISER Luxembourg*), "Wages and Family Time Allocation"

Thu. 13.30-15.30 E5. Household decisions-- R1 14

Chair: Frederic Vermeulen (*University of Leuven*)

Julien Monardo (*CREST-ENS Paris-Saclay*), Andre de Palma, Nathalie Picard, Anthony Ziegelmeyer, "Decision-Making under Risk: From Individual Preferences to Couple Decisions"

Alex Wolf (*Institute for Fiscal Studies*), "Resource Allocation in Couples - A Collective Model with Prior Information"

Nathalie Picard (*THEMA, University of Cergy-Pontoise and Ecole Polytechnique*), André de Palma, Sophie Dantan, "Leadership in mode choice decisions within couples"

J. Alberto Molina (*University of Zaragoza*), Jose Ignacio Gimenez Nadal, Jeorge Velilla, "Intertemporal labor supply: a household collective approach"

Thu. 13.30-15.30 E6. Financial decisions -- R1 13

Chair: Laura M. Argys (*University of Colorado*)

Mahnaz Mahdavi (*Smith College in Massachusetts*), Nick Horton, Rene Heavlow, "Financial Participation by Educated Women: Impact of Competency and Confidence"

Anzelika Zaiceva (*University of Modena and Reggio Emilia*), "The Nativity Gap in Financial Decisions: Evidence from Italy"

Marike Knoef (*Leiden University & Netspar*), Jim Been, Joost Dalhuijsen, "Early-life financial behavior, intergenerational transfers, and employment: Insights from a nudge in student loan policy"

Anita Mukherjee (*Wisconsin School of Business, University of Wisconsin-Madison*) "Time and Money: Social Security Benefits and Intergenerational Transfers"

Thursday 15.45-17.45 Parallel Sessions F: Savings & Welfare, Marriage, Labor Children & Parents, Household Production & Food Insecurity

Thu. 15.45-17.45 F1. Savings & Welfare -- R2 21

Chair: Jeanne Lafortune (*Pontificia Universidad Catolica de Chile*)

Stefania Basiglio (*University of Turin and Tilburg University*), Maria Cristina Rossi, Arthur van Soest, "Subjective inheritance expectations and economic outcomes"

Yoko Niimi (*Asian Growth Research Institute*), "Do Borrowing Constraints Matter for Intergenerational Educational Mobility? Evidence from Japan"

Luigi Ventura (*Sapienza, University of Rome*), "Households as insurance mechanisms"

Max Groneck (*University of Groningen*), Johanna Wallenius, "Single Mothers and the Welfare State"

Thu. 15.45-17.45 F2. Marriage -- R2 01

Chair: Hippolyte d'Albis (*Paris School of Economics*)

Eva Garcia-Moran (*University of Wuerzburg, Germany*), Vincenzo Galasso, "Fertility, Divorce and Remarriage: The Role of Secondary Markets"

Alexander Vickery (*Royal Holloway University of London*), "Actions Speak Louder Than Words: Social Norms in the UK Marriage Market"

Hanno Foerster (*University of Mannheim*), "The Impact of Post-Marital Maintenance on Dynamic Choices and Welfare of Couples"

Christian Holzner (*University of Munich*), Bastian Schulz, "Marriage and Divorce under Labor Market Uncertainty"

Thu. 15.45-17.45 F3. Labor & Well-Being -- Amphitheater

Chair: Ofira Schwartz-Soicher (*Princeton*)

Susan Averett (*Lafayette College & IZA*), Cynthia Bansak, Julie Smith, "Behind Every High Earning Man is a Conscientious Woman"

TerraMcKinnish (*University of Colorado*), "Overwork in Spouse's Occupation & Degree Field and the Labor Market Outcomes of Skilled Women"

Chiara Monfardini (*University of Bologna*), Giorgio Belletini, Carlotta Berti Ceroni, Enrico Canton, "Family Structure and the Turnout Gender Gap: Evidence from Italy"

Catherine Sofer (*University Paris I Panthéon Sorbonne*), Claire Thibout, "Women's Investment in Career and the Household Division of Labor"

Thu. 15.45-17.45 F4. Children & Parents – R1 16

Chair: Nancy E. Reichman (*Rutgers University*)

Anne Laferrere (*Université Paris Dauphine*), "Need for long-term care, informal care from children, type of welfare state, past transfers and prospective bequest: is there a link?"

Bart van Leeuwen (*University of Groningen*), "Daycare cost and time use"

Claire Thibout (*The University of Melbourne*), David Ribar, Seth Sanders, "Dissolution, Conflict and Australian Children's Developmental Outcomes"

Vincent Vergnat (*Strasbourg University*), "The time and the transitions back to work in France after maternity"

Thu. 15.45-17.45 F5. Household Production & Food Insecurity -- R1. 13

Chair: Elsa Fontainha (*ISEG Lisbon*)

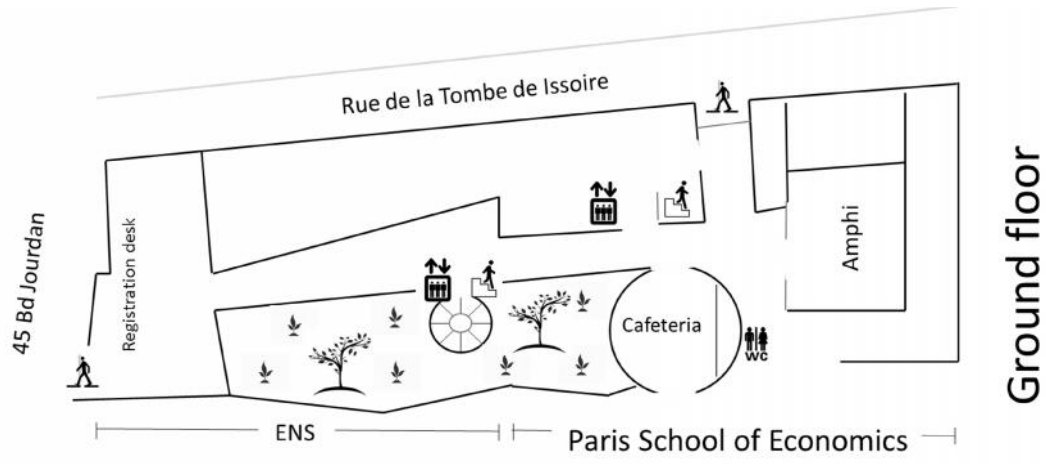
Melanie Borah (*Otto von Guericke University Magdeburg*), "Appreciating the Proceeds from Household Production. The Determination of Extended Income Equivalence Scales from Income Satisfaction and Time Use Data"

François Gardes (*Paris 1 Panthéon-Sorbonne*), Christophe Starzec, "The estimation of price elasticities and the value of time in a domestic production framework: an application on French micro-data"

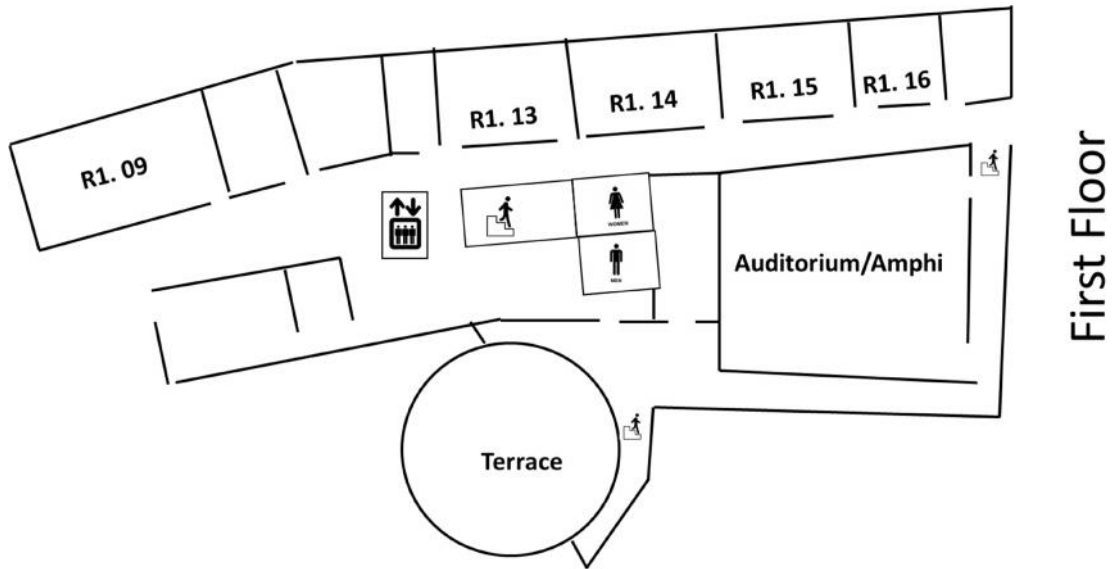
Anna Vallušová (*Matej Bel University, Slovakia*), "Determinants of Intrahousehold Specialisation – An Insight into Time Economy of Slovak Households"

Craig Gundersen (*University of Illinois*), "Food Insecurity Research in the United States: Where We Have Been and Where We Need to Go"

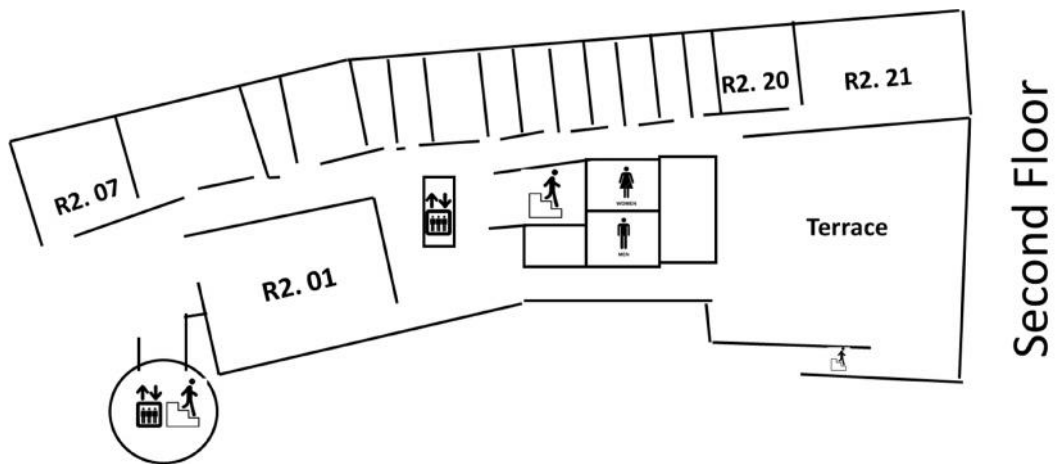
Thu. 18:00-18:30 SEHO members assembly-- Amphitheater



Ground floor



First Floor



Second Floor